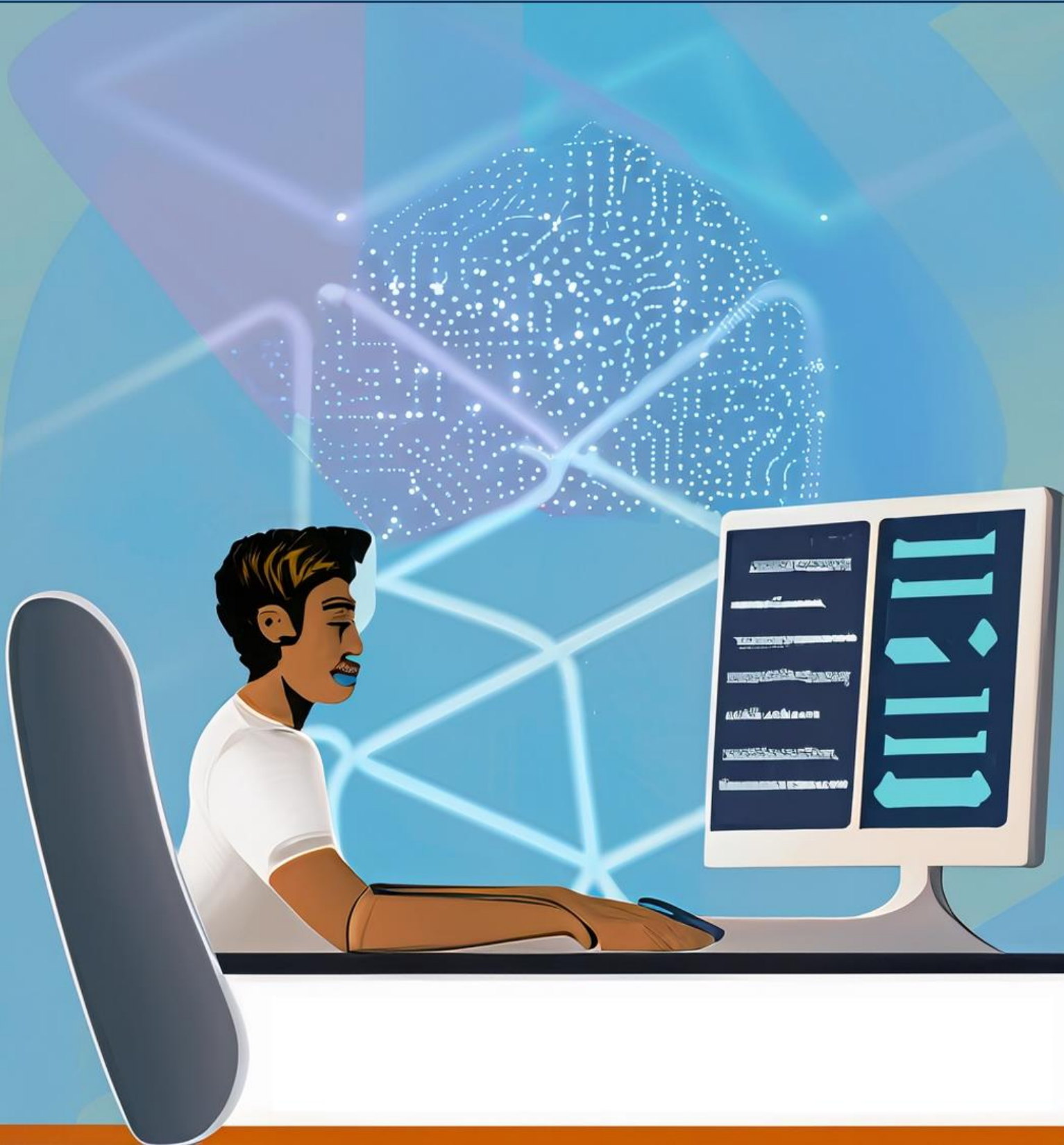


Using Generative Artificial Intelligence for assessment: A Student Guide

Nigel Francis – Cardiff University – francisn10@cardiff.ac.uk

David Smith - Sheffield Hallam University – d.p.smith@shu.ac.uk



Using Generative Artificial Intelligence for Assessment: A Student Guide

Dr Nigel Francis – francisn10@cardiff.ac.uk

Prof David Smith – d.p.smith@shu.ac.uk

As generative Artificial Intelligence (AI) tools become more widely available, it is important, to use them appropriately, ethically and in a way that upholds academic integrity. AI systems can provide helpful information and boost your studies, but they have several limitations that you should be aware of.

What is it anyway?

Let's explain what AI chatbots like ChatGPT and Bard are. Essentially, they are a type of artificial intelligence called a "large language model" (LLM). Think of them as superpowered predictive text. These AIs are trained on massive amounts of text data from various sources, such as internet books, websites, blogs, etc., to learn as much human language as possible. When you ask a chatbot a question or give it a prompt, it uses its training to predict the most likely words to respond with based on all the words it has seen before. AI chatbots can greatly enhance research, productivity, and entertainment due to their expansive knowledge base and conversational abilities. However, it's essential to approach them with a critical mind, understanding their responses are based on patterns and not human intuition.

Follow your institutional guidelines carefully.

- **Know the rules.** Academic regulations are the rules Universities follow and these differ from place to place. They can normally be found on the student intranet and set out what is and is not allowed. You should carefully check instructions for individual assessments, as usage policies may vary across coursework types.
- **Talk to your tutor.** Using AI in ways that are not specifically permitted may constitute academic misconduct with very serious consequences. When in doubt, have an open conversation with your tutor.
- **Cite AI use.** Ensure you cite any AI sources appropriately by the institutional referencing style guide. Failing to attribute AI content used in your work properly may be considered an unfair practice.

Ensure the final product reflects your skills.

- Take ownership of your work, think critically, and engage with your learning. Do not copy or rephrase AI-generated content. Your assessments reflect your skills and ideas, so demonstrate them effectively.
- Keep records of your work process when using AI tools for coursework. Save drafts, AI prompts, and outputs (most AIs save these in the chat). If your work is flagged for unfair practice, these records will help you show academic integrity.
- Reflect on how the use of generative tools impacts your learning. Are you missing opportunities to gain skills by overly relying on AI for certain tasks? Ultimately, if you

do excessively rely on AI to produce work, you may not achieve the learning outcomes for your course, which can have future implications during employment.

Evaluate AI information critically.

- AI lacks human intuition, and its outputs may contain fabrications, biases, or hallucinations. To ensure accuracy, verify any information obtained from generative AI tools with credible sources. Cross-referencing against peer-reviewed papers, textbooks, and lecture materials is essential.
- Be aware of potential biases that may be encoded in AI systems. Generative outputs reflect the models and data the systems were trained on and do not reflect all viewpoints.
- Apply your own critical analysis to AI outputs. Don't assume generative tools produce completely objective truth.

Use AI ethically to enhance your learning.

- Avoid inputting any sensitive personal or confidential information into public AI systems. If you sign up for an AI tool make sure you understand the privacy policies of those tools.
- Under no circumstances should AI tools be used to gain advice on issues such as your health, and wellbeing or other potentially sensitive issues such as finances. Many Universities have professional services that can advise you.
- Ultimately the ethical and appropriate use of AI rests with you. Before you use an AI tool or submit a piece of work take a moment to reflect on whether your use of AI upholds the ethical principles of honesty, accountability, and academic integrity.

Summary

By developing AI literacy and appropriately integrating generative AI technologies into your work, you can enhance your learning journey while still producing original work that upholds academic integrity values. The key is developing the judgement to know when and how to use these rapidly evolving tools are used to their best effect.

If in doubt...ask!