

VERBS FOR SHFEA CLAIMS

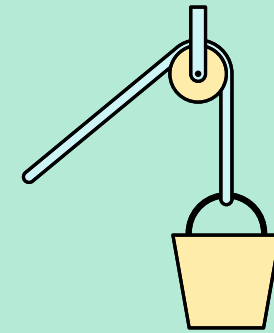
GETTING SOMETHING STARTED

Created
Instigated
Initiated
Inspired
Devised
Innovated
Pioneered
Proposed



BUILDING SOMETHING

Built
Established
Implemented



PROMOTING SOMETHING



Advocated
Argued for
Championed
Disseminated
Lobbied

DRIVING SOMETHING

Spear-headed
Steered
Developed
Shaped
Enthusied
Challenged (to change direction)
Co-ordinated
Arranged
Embedded



USING EXPERTISE



Advised
Consulted
Invited
Guided
Represented
Informed
Led
Chaired
Published

BRINGING THINGS (OR PEOPLE) TOGETHER

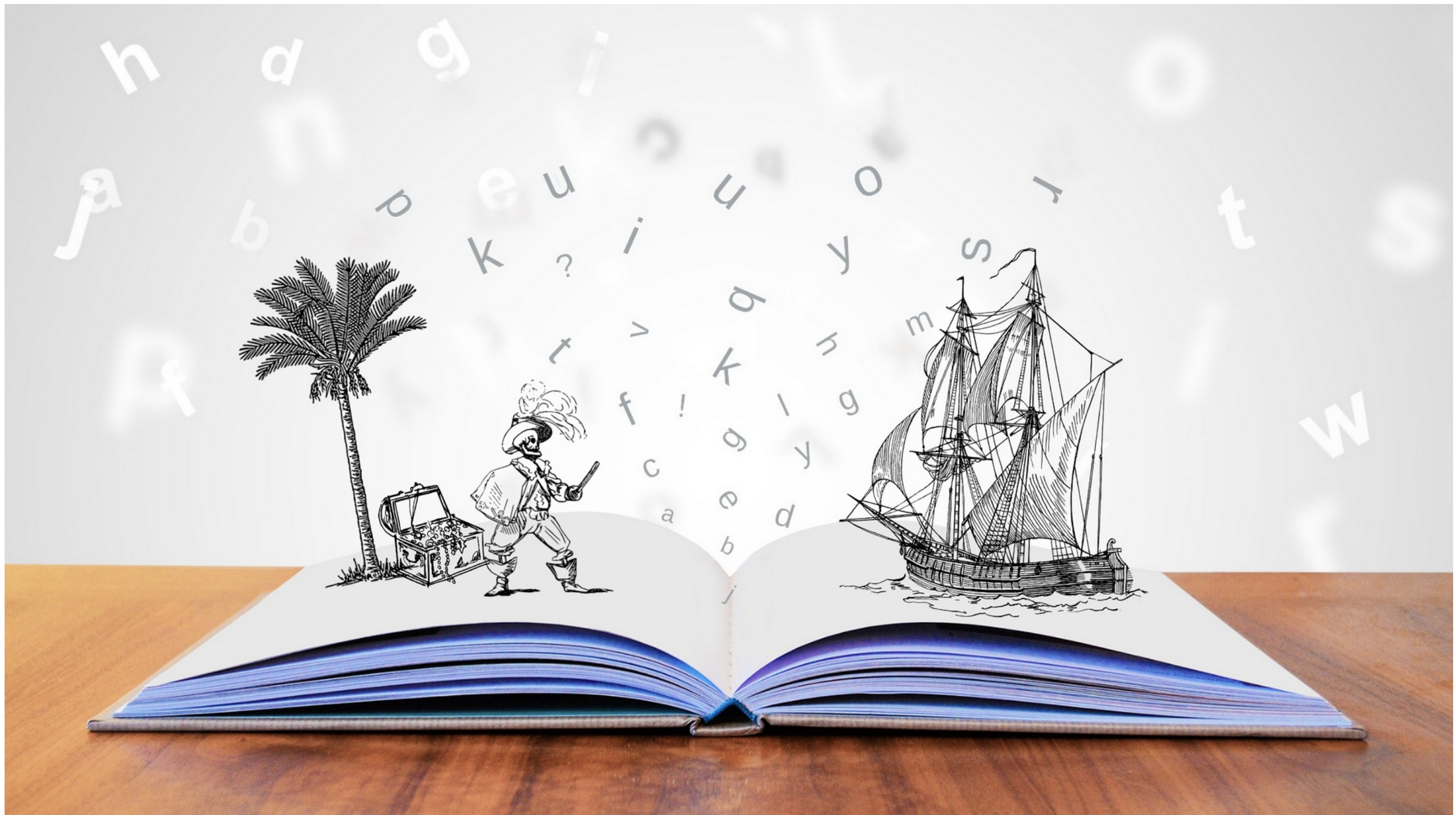
Co-ordinated
Liaised with
Mediated
Curated
Collaborated
Drew on expertise (of others)
Organised
Negotiated
Convened

SUPPORTING OTHERS

Facilitated
Mentored
Nurtured
Motivated
Sponsored
Empowered

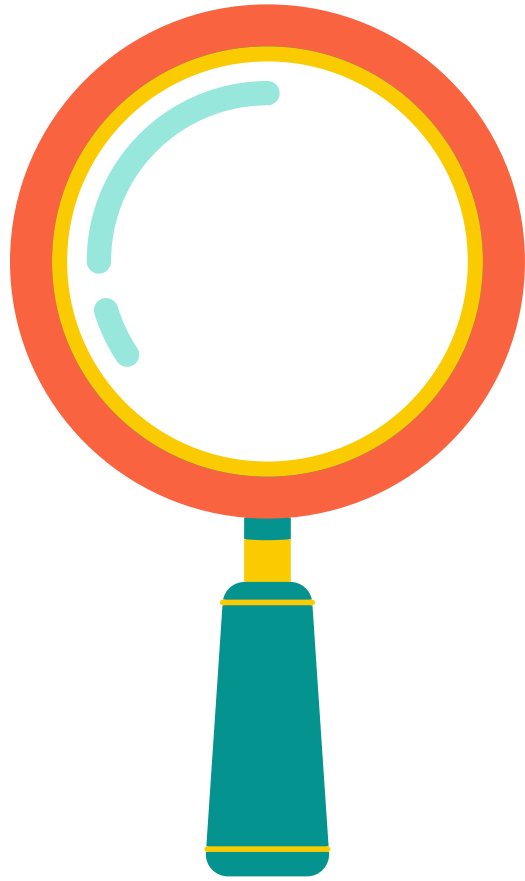


TELLING YOUR SHFEA STORY



Case study narrative	
Theme	What is the theme or project that you are going to discuss?
Character	What was your specific role? What is/was your approach as a leader, expert, mentor, etc?
Setting	What is the context for the work you are describing? Why was it needed? What was the scope?
Conflict	What were the challenges to getting the work done? How did you have to approach it? What's your evidence of 'winning'?
Plot	What were the key steps in the process? Who are the lesser players? Who was influenced and how? How has the direction of the plot changed as a result of your actions?

SFHEA WORK - GETTING THE FOCUS RIGHT



Fellow examples	Senior Fellow examples
Teaching students on a module	Leading colleagues who teach on a module
Using learning from external roles to develop your practice	Giving feedback to external partners/colleagues to help them to provide effective learning
Teaching awards that you have won	How you disseminate the excellent practice you have been recognised for
Giving effective feedback to students on your course	Giving effective feedback to colleagues to help them to develop their teaching
Adapting your teaching to make it more inclusive for your students	Supporting colleagues to make their teaching more inclusive or influencing admissions processes to increase diversity on your programmes
Using student data to develop your teaching practice	Using student data to lead changes to a module or to influence others to make changes
Supporting students to transition into Higher Education	Supporting new staff to transition into Higher education

The examples here are by no means meant to be exhaustive - they are intended to indicate how the same work or practice can be presented through a D2 lens for an FHEA claim, or through a D3 lens for an SFHEA claim. There are LOTS of other relevant examples that you could include...

