

Storyboard: *Remember Me* (Helen Newall July 2015)



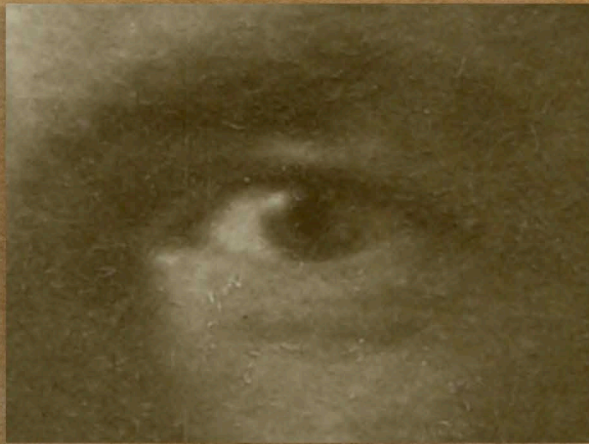
1 Opening Titles: *Remember Me*

Sky and trench

In: 00:00

Out: 00:30

Time approx: 30 seconds



2 Eyes

Extreme close up eyes.

Identity and nationality therefore excluded.

Five shots static.

Then similar number begin slowly to pull out.

In: 03:00

Out: 05:00

Time approx: 2 minutes



3 Faces

Close-up sequence of faces.

Then pulling back to reveal uniform signifiers of national identity.

Parallax effect

Puppet shots.

In: 05:00

Out: 06:00

Time approx: 1.00 minutes



4 Figures

Mid range shots. Single figures. Groups.

Identity and nationality visible.

Parallax effect

Puppet shots.

In: 06:00

Out: 07:00

Time approx: 1 minute



5 Men in Landscapes

Plates fade to reveal cut-out figures.

Backgrounds: war landscapes; abstract; postcard scripts. The shift from domestic and/or home-front location to the Front.

Parallax shots

Puppet shots

In: 07:00

Out: 08:00

Time approx: 1 minute



6 Groups

Mix of groups and singles to make crowds.

Parallax.

Puppet shots.

Visual effects - as yet unspecified!

In: 08:00

Out: 09:00

Time approx: 1 minute



7 Fade Landscapes

Group shots. Singles.

Landscapes fade to Plates

Parallax.

Puppet.

In: 09:00

Out: 10:00

Time approx: 1 minute



8 Fade Figures

Singles. Groups fade to reveal empty plates

In: 10:00

Out: 11:00

Time approx: 1 minute



9 Burn

Plates burn out to black.

In: 11:00

Out: 12:00

Time approx: 1 minute