

The background of the slide features a dark blue gradient with several horizontal, slightly curved lines. Various colorful cartoon birds (purple, green, red, blue, and yellow) are perched on these lines, facing different directions. The text is overlaid on this background.

Resource and Output Summary

#SocMedHE20 #educator_connect

“The importance of online support networks for educators”

This page is a summary of resources and outputs from our Tweetposium Presentation at #SocMedHE20 on the 17th December 2020. This includes Flipgrid Videos, a Twitter moment, Sketchnotes, Wordcloud, Infographic and links to associated blog posts that you may find helpful.

We will be adding to this over the next few days so check back soon if there is something specific you are interested

Authors

- Debbie Baff @debbaff
- Sue Beckingham @suebecks
- Rachelle O Brien @rachelleeobrien
- Dawne Irving-Bell @belld17
- Suzanne Faulkner @SFaulknerPandO
- Sarah Wright @Sarah__wright1

Background

Community, Care and Compassion

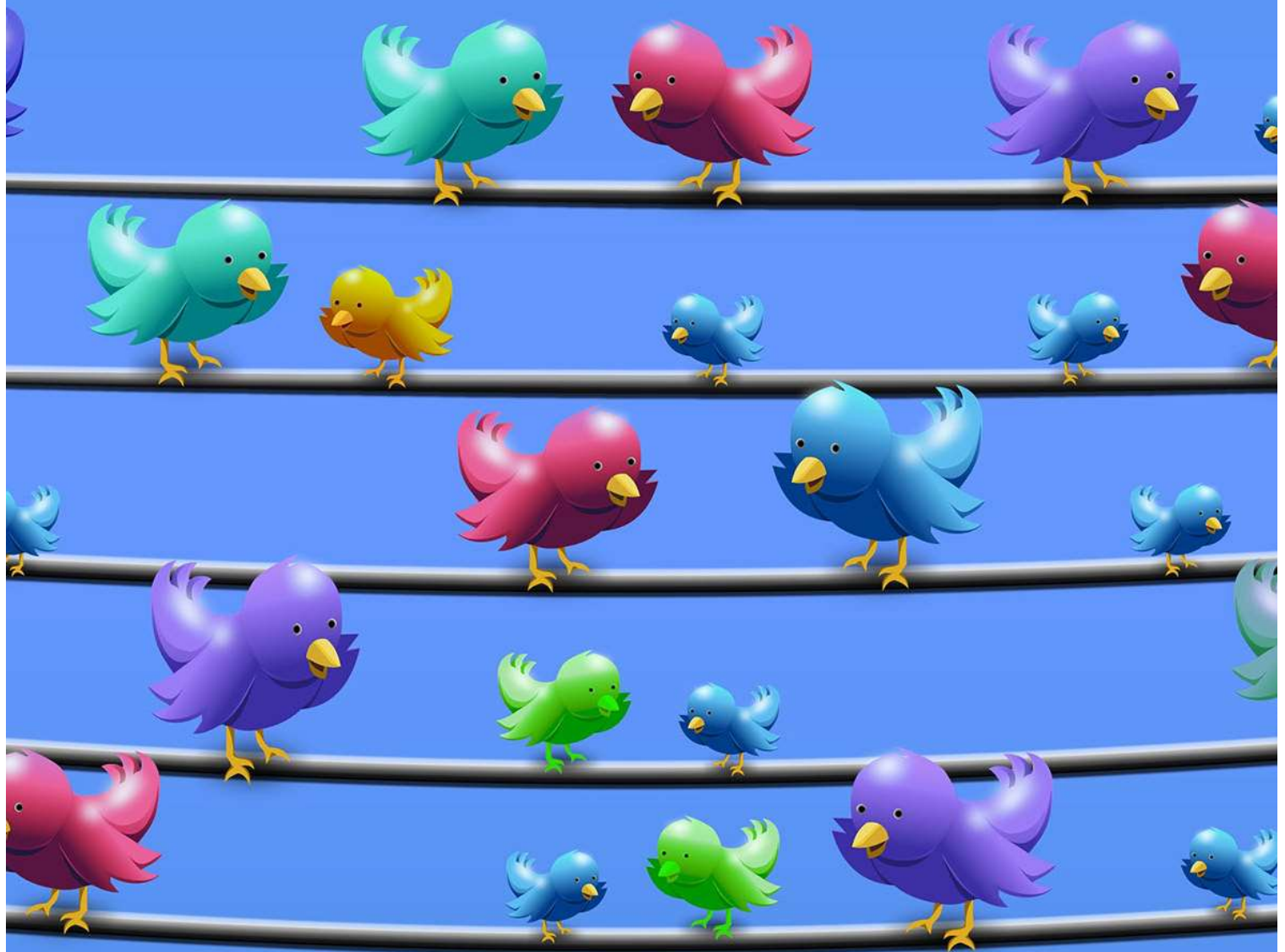
In March 2020 a group of educators came together in search of mutual support to help combat worries and concerns in relation to the impact of the COVID19 Pandemic. Through our existing contacts in our own Personal Learning Networks we were able to to harness support and strengthen our connections through the power of social media. On December 17th at the [Social Media for Learning in Higher Education Conference](#) #SocMedHE20 #educator_connect we hosted a Tweetchat and Flipgrid activity to share our experiences in relation to how we felt when we first started the network and to discuss how social media can be used to build **community, care** and **compassion**.

Our presentation for the Tweetposium and Introductory Adobe Spark [can be found here](#).

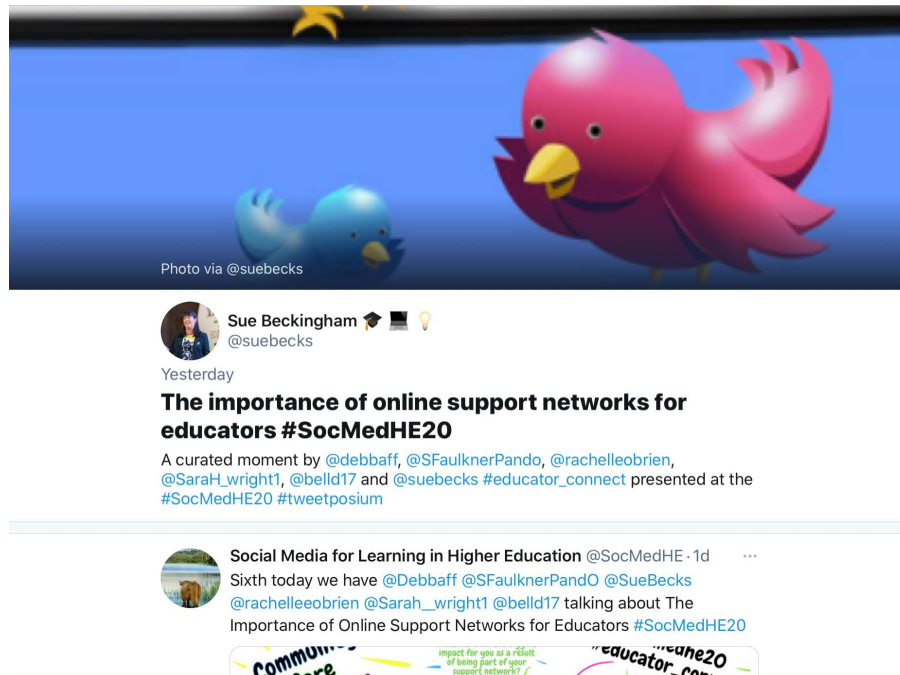


Sue Beckingham, Deb Baff, Rachelle O'Brien, Dawne Irving-Bell,
Suzanne Faulkner & Sarah Wright

Twittermoment



Twitter Moment

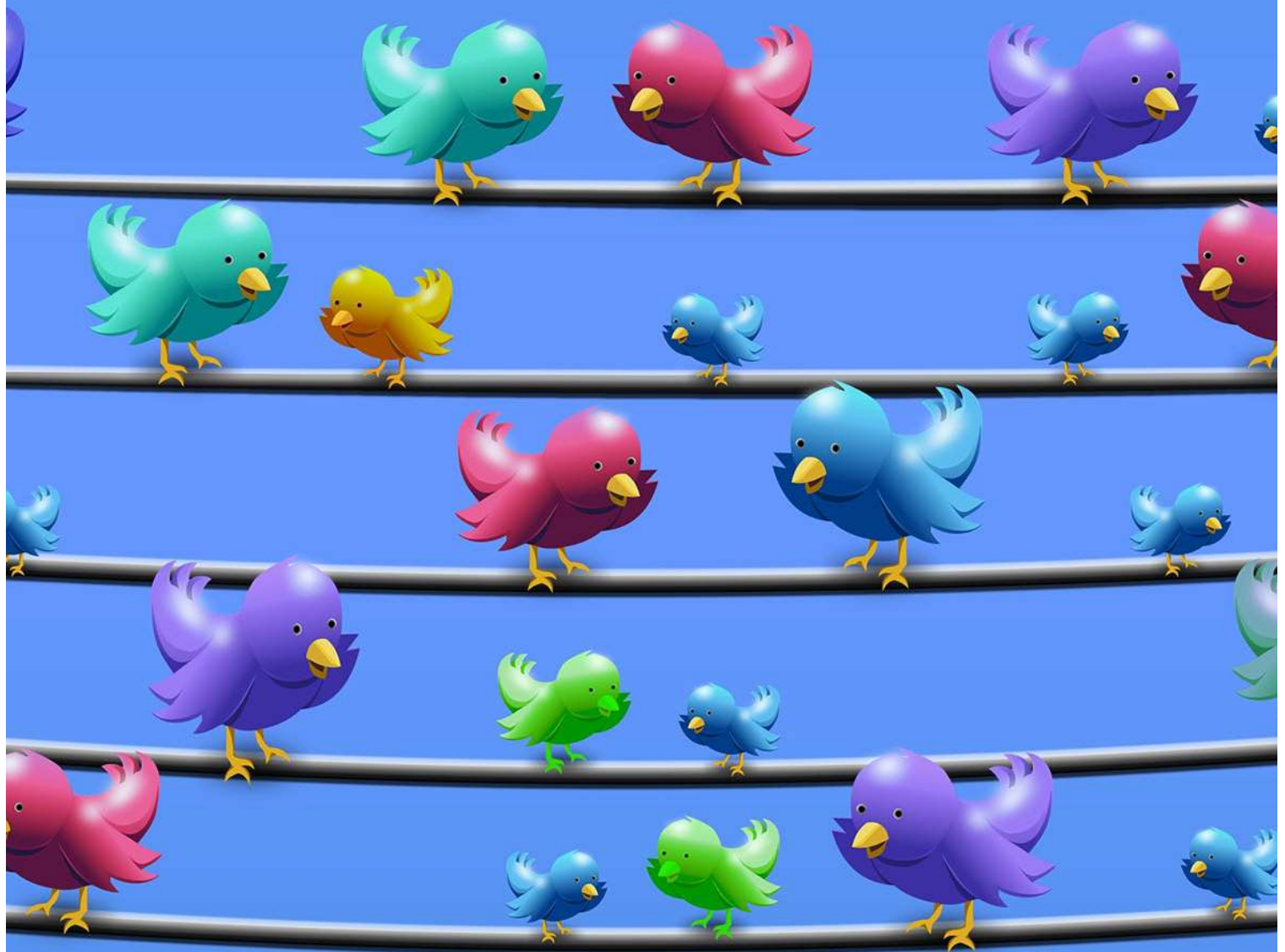


Visit our [Twittermoment](#) by Sue Beckingham

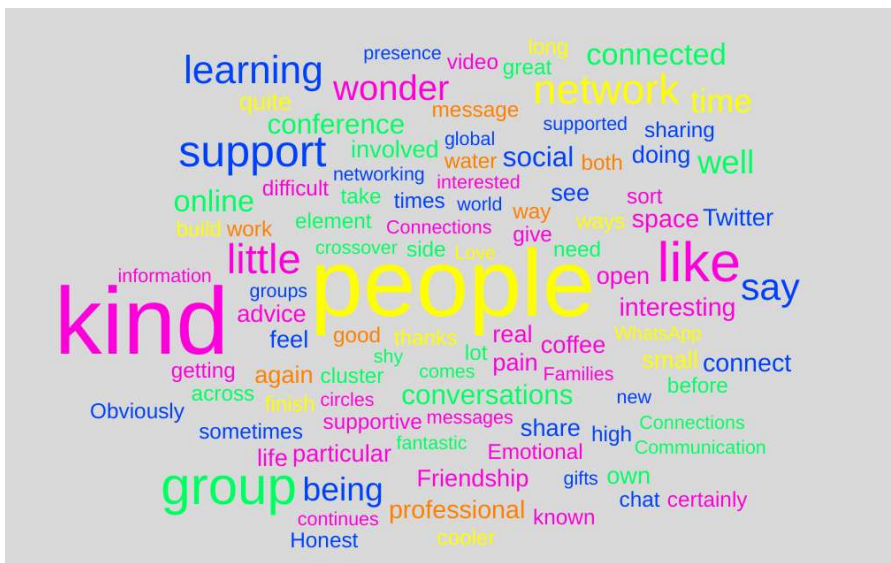
A link to our Twittermoment can be found below with a curation of tweets on the day

Tweetmoment

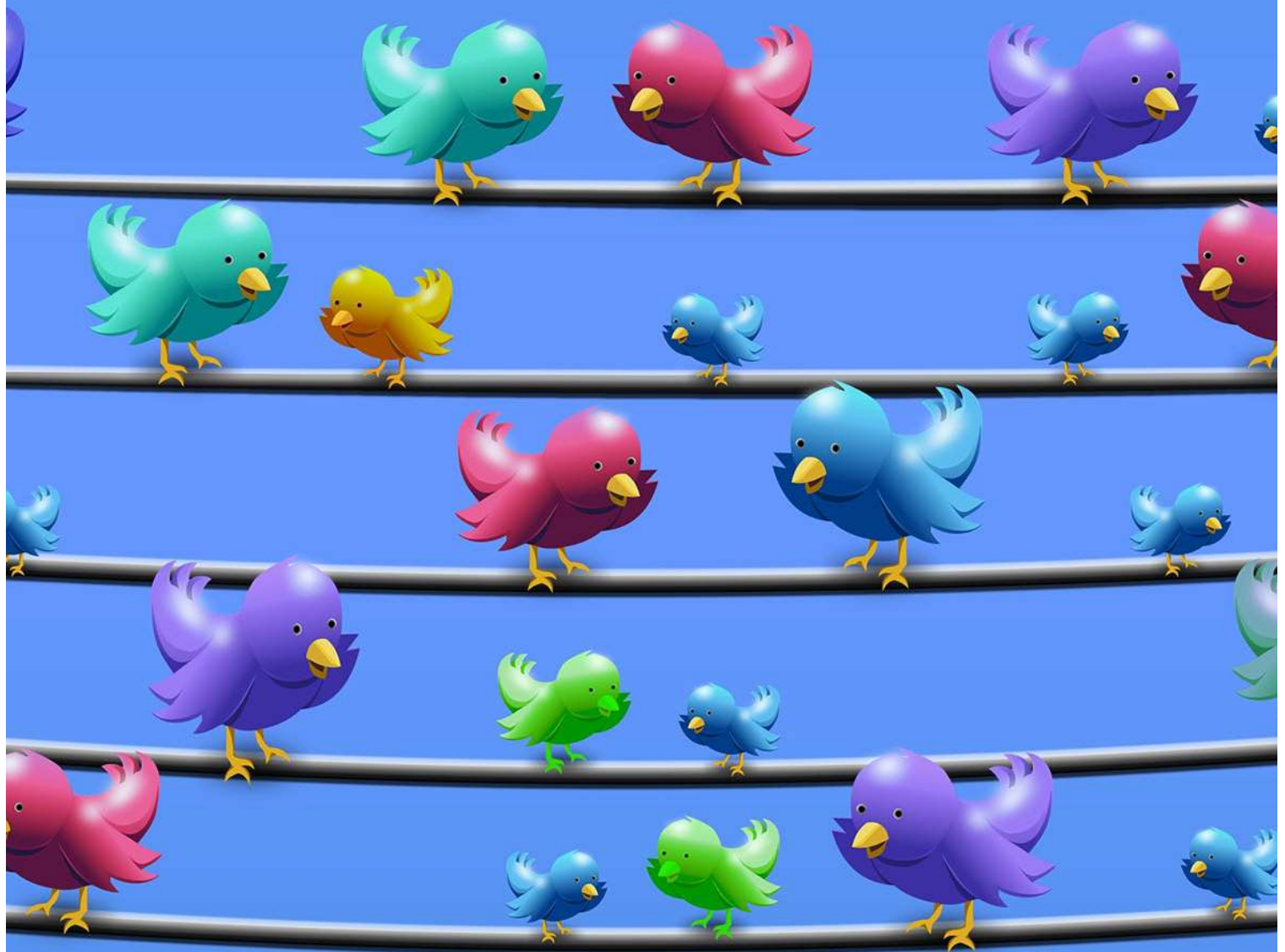
WordCloud



Wordclouds

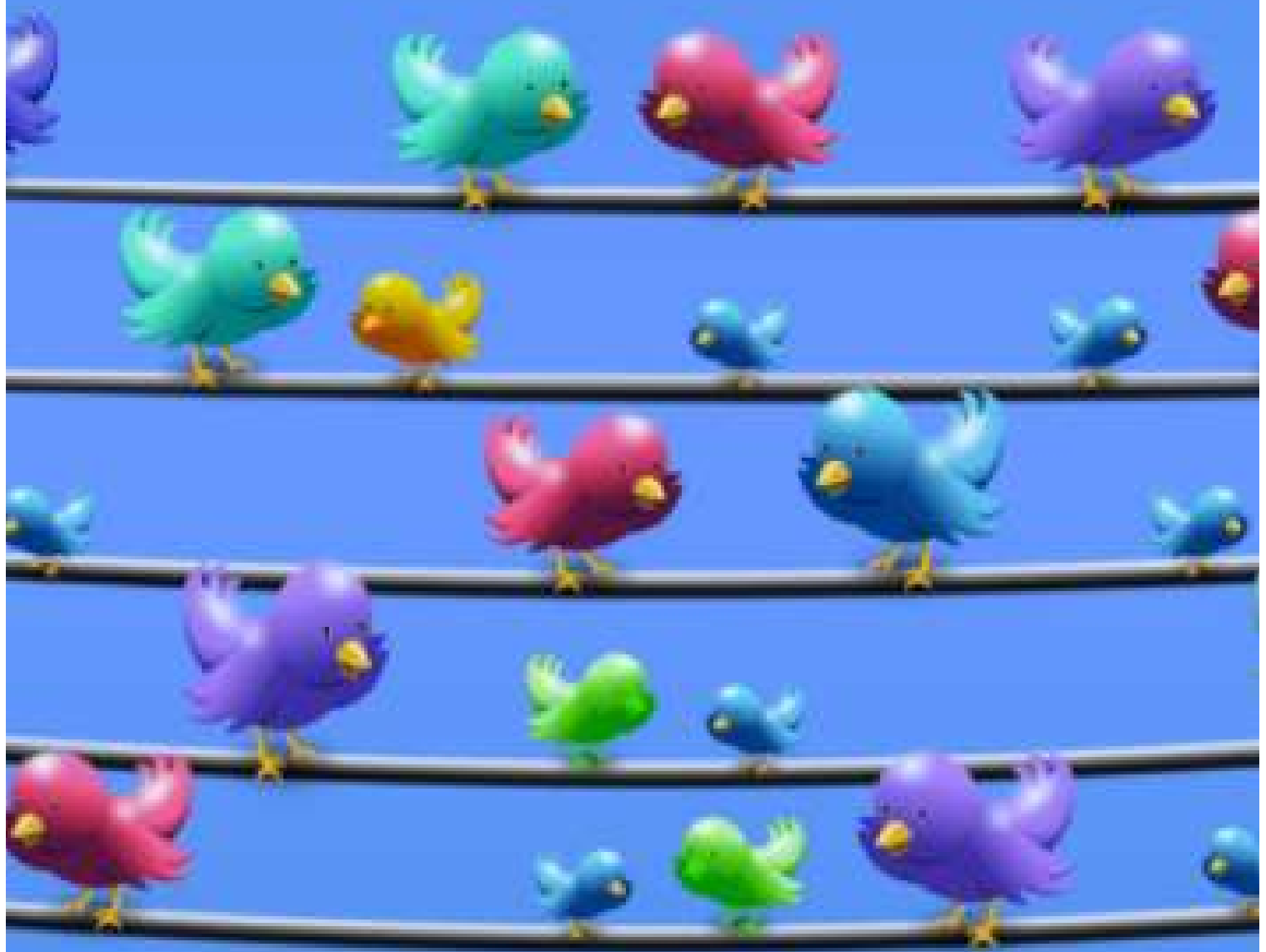


Sketchnotes





Infographic



How to Create an Online Support Network

Tips on using social media to create an online support network



In March 2020 a group of educators came together in search of mutual support to help combat worries and concerns in relation to the impact of the COVID19 Pandemic. Our support network has without helped us greatly and continues to be of value. We'd like to share some tips to help others create an online social support network of their own.



Reach out

The first step is to reach out to the individuals you would like to invite to your group. Whilst there is no limit to the numbers, small groups can help to ensure everyone's voice is heard.



Create a private group chat for your support network.

This can be done easily using Twitter group direct messages. Next add the names of the people to the group and give it a name. We also chose to create a WhatsApp group.

Communication

Decide where and when you will meet up in real time online. Where possible have a regular meeting time. It's a nice feeling having that meet-up to look forward to, and you can plan other things around it.



Zoom was our chosen meeting space.

One member of the group had the pro version allowing us to extend the meeting beyond the 40 mins offered with the free version. Tools like Doodle can help you and your group choose the optimum time for you to meet.

Diary

When you've agreed your regular meet up time, put it in your diary as a recurring meeting. It is important you carve out this time for yourself.



Share the meeting link in your chosen group chat. That way it is easy to locate and click on to join the meeting. Avoid sending in email where it may get buried!

Flexibility

Don't feel you have to attend every online meeting. Other commitments will mean that you may sometimes have to miss a meeting. Worry not as you will be able to catch up via the group chat.



Share any photos you might talk about in your group chat (in addition to or in place of the meeting chat as these are lost once you close the meeting unless you choose to record). That way if anyone is missing from the online meeting they can see these later.

Experiment

Take the opportunity to try out using different technology and devices. This a chance to learn with each other about the different features.



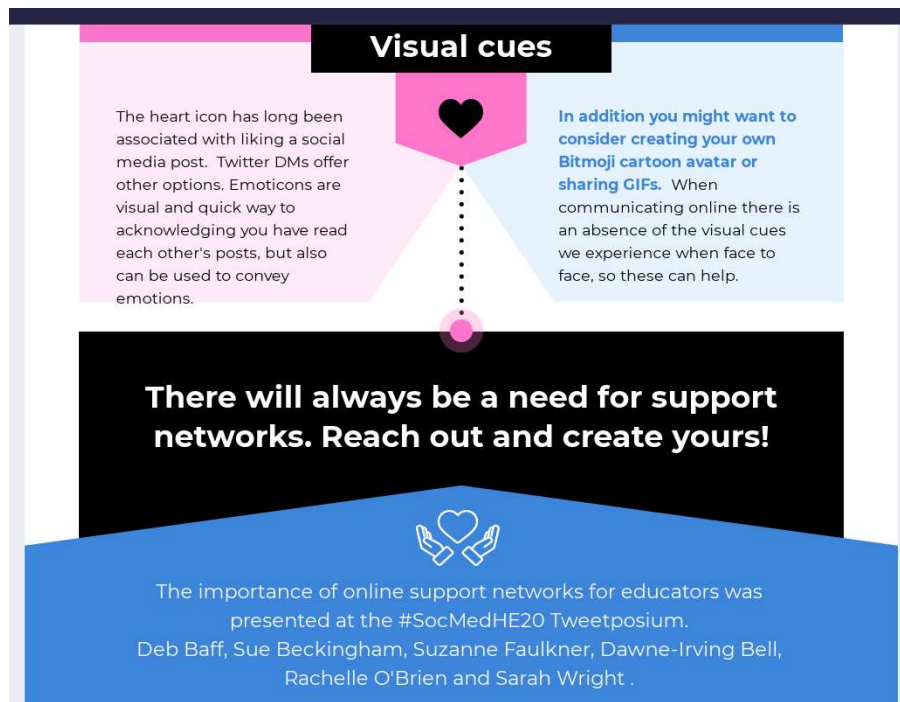
It's good to have **alternative spaces** in case your chosen online meeting space goes down. MS Teams, Google Meet, Blackboard Collaborate are alternatives one of your team may have access to.

Check-in

Check the group chat daily **where possible** to keep up with messages. Dipping into a group chat regularly can be done at a time that is convenient to you and via the device of your choice.



Notifications can be enabled to let you know when there are new messages. You can also set alerts to remind you when a meeting is coming up. Set this to 15 minutes before, to give you time to pop the kettle on!

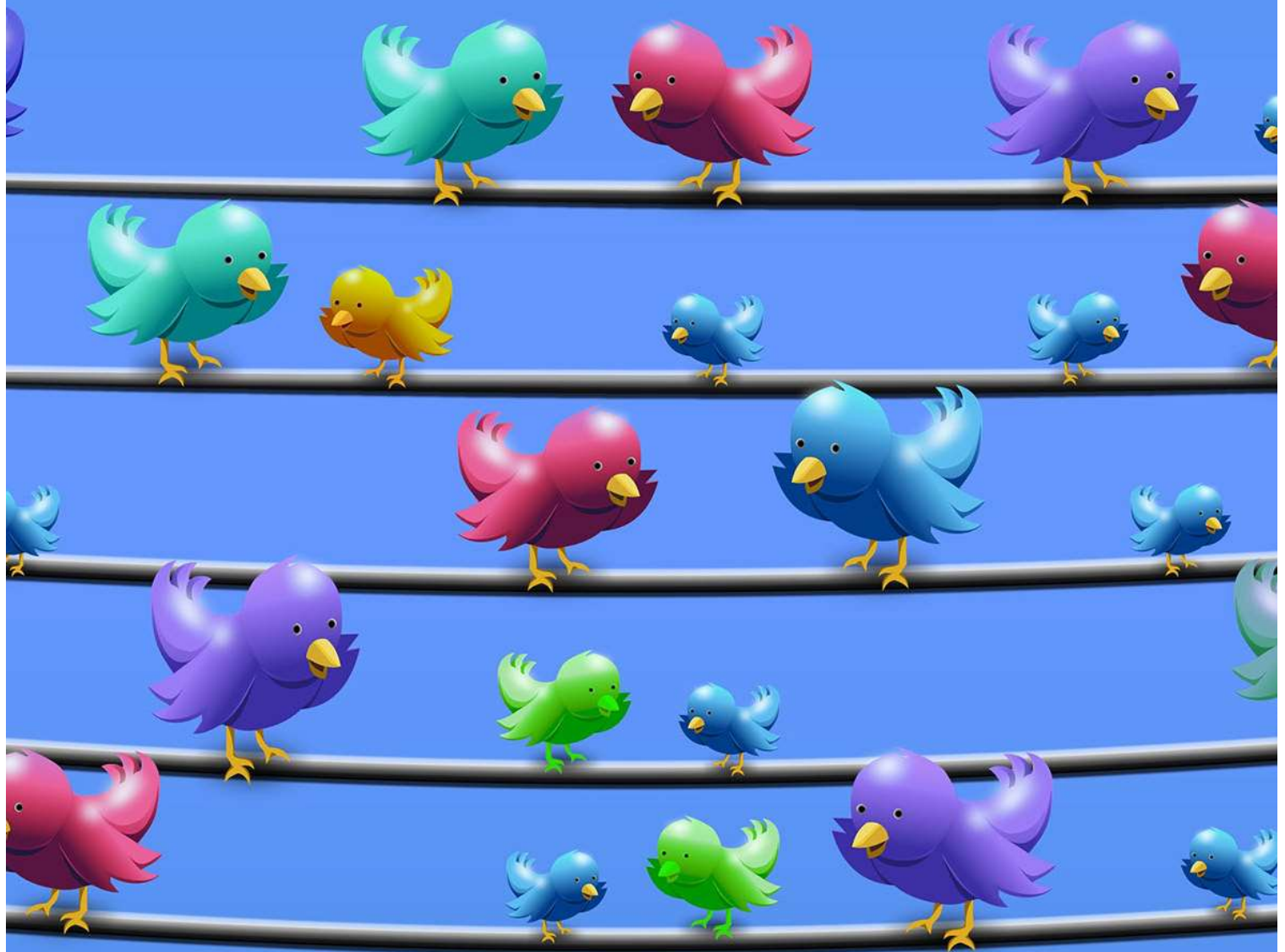


Infographic by Sue Beckingham

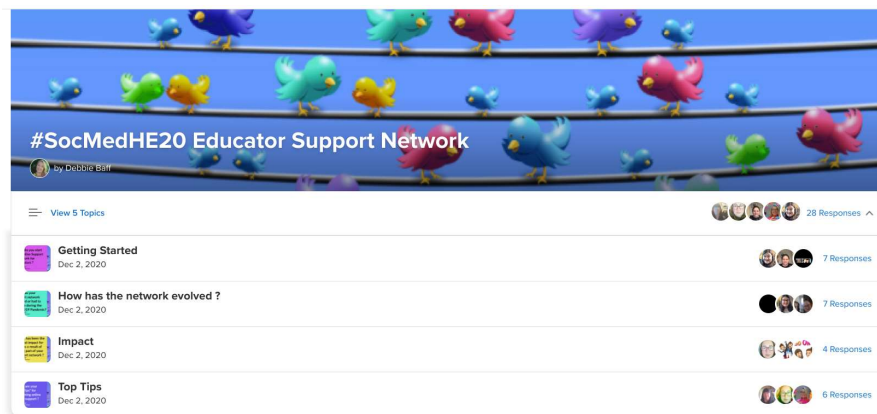
You can see the full infographic curated and produced by Sue Beckingham via the button below

Infographic on Piktochart

FLIPGRID RESOURCES



Flipgrid Group and Topics



#SocMedHE20 Educator Support Network



Debbie Baff
Group Owner



Engagement

5 Topics **23** Responses **5** Replies **211** views **13.6h** of engagement

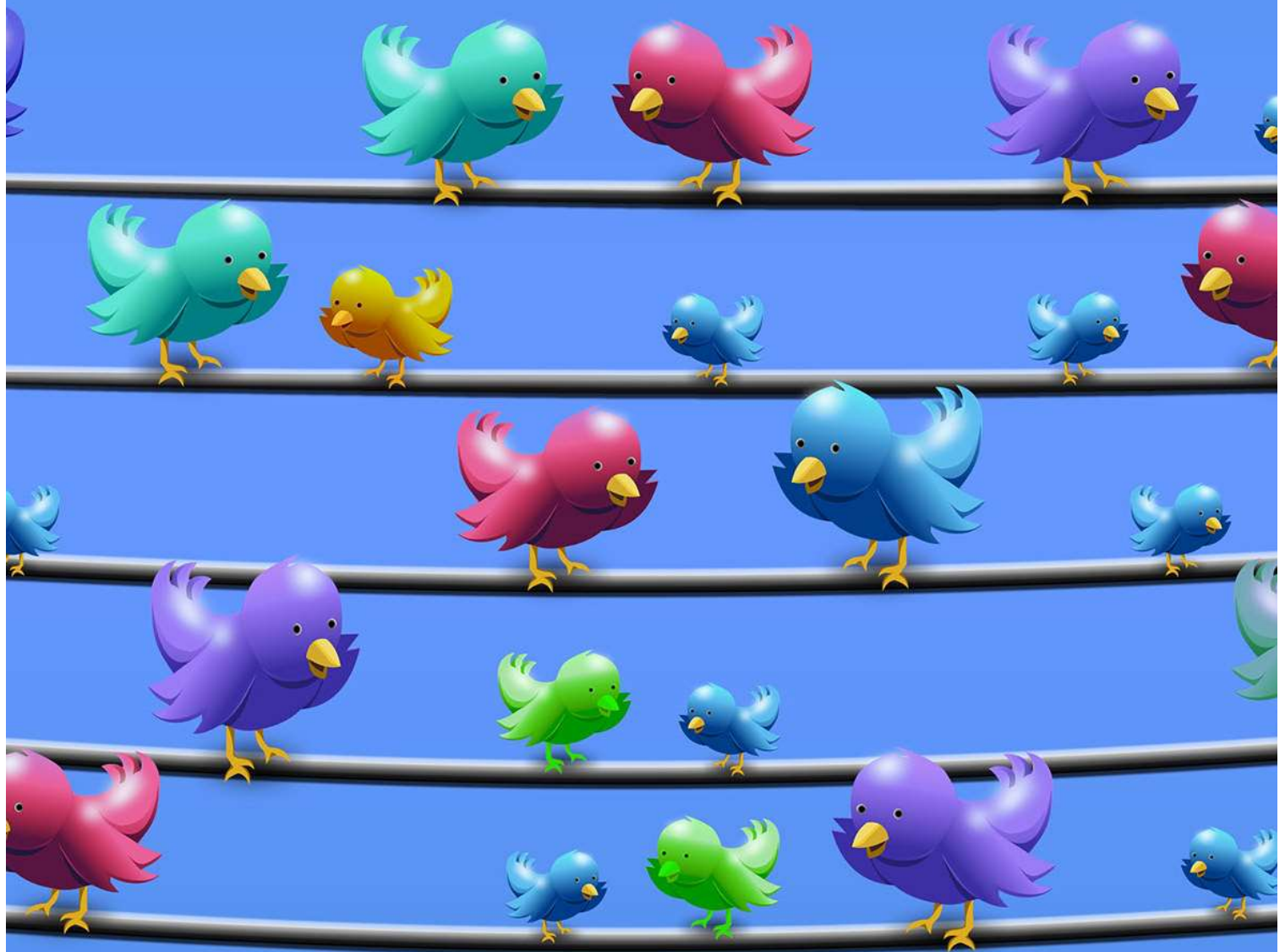
Fun fact: This Group has 13 hours and 34 minutes of engagement! That's how long it takes to watch the original Ghostbusters 9 times!

Join Code: baff6315

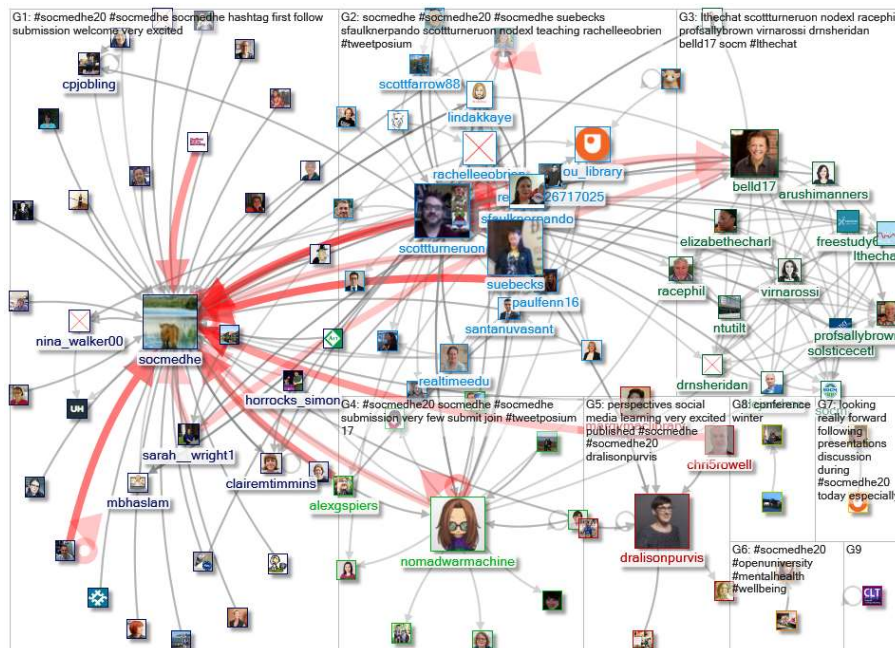
The Flipgrid topics are still open if you wish to record a video and be part of the conversation. Visit the main Flipgrid on the button below.

[#SocMedHE20 Educator Support Network Main Flipgrid](#)

Other Resources



Network Map Report



Visualisation of #SocMedHE

The graph represents a network of 92 Twitter users whose tweets in the requested range contained "#SocMedHE", or who were replied to or mentioned in those tweets. The network was obtained from the NodeXL Graph Server on Friday, 08 January 2021 at 07:20 UTC. The

requested start date was Friday, 08 January 2021 at 01:01 UTC and the maximum number of tweets (going backward in time) was 7,500. ~ Via Connected Action

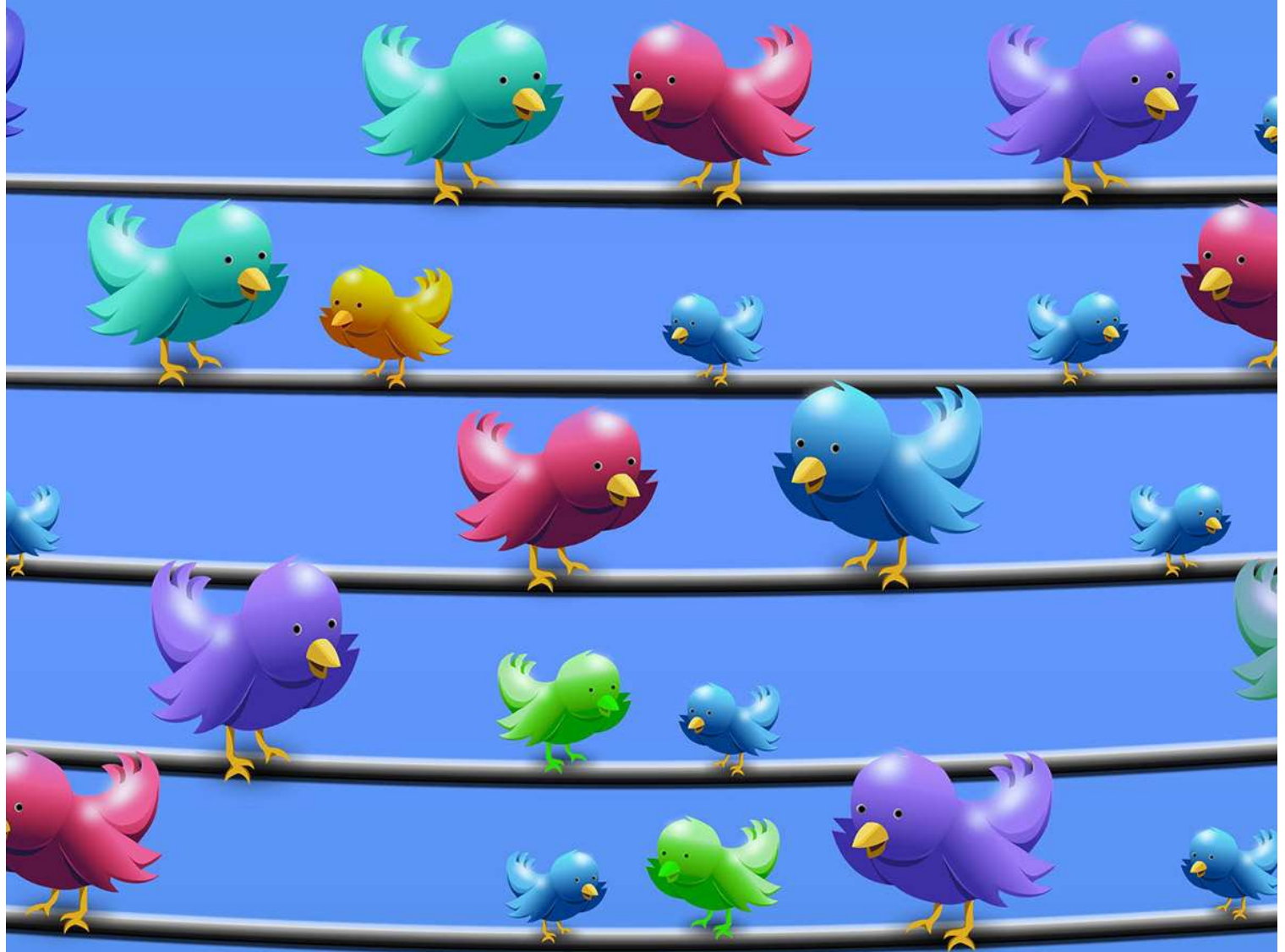
Text and image supplied following a request sent to [NodeXL](#) Social Media Network Map and [Connected Action](#).

[Link to NODEX Graph Gallery](#)

Related Blog Post Links

<<coming soon>>

Thank you



We hope you have enjoyed our presentation as much as we have enjoyed pulling it together. Please do get in touch with any of us if you would like to take the conversion further.



Author Profiles

Deb Baff

Debbie Baff is the Membership and Professional Development Manager for the Association for Learning Technology (ALT) and leads a portfolio of work relating to Membership Services and has responsibility for the development and management of the CMALT Accreditation Framework. Debbie has been working in UK Higher Education since the late 1990's working across all areas of the student and staff experience. She is an experienced Senior Academic Developer and

Manager, is a fellow of the Higher Education Academy (FHEA) and is a Certified Online Learning Facilitator (COLF) and Flipgrid Certified Educator . Debbie holds a Masters in Online and Distance Education, an MSc in Business Psychology and a BSc (Hons) Psychology , Debbie is in her fourth year of a part time PhD in Technology Enhanced Learning and E- Research at Lancaster University. Her research interests include personal learning networks and emotional support, open, social and online collaboration and connecting communities through technology enhanced learning. Prior to her career in education, Debbie was a qualified Chartered Surveyor. Debbie is a fan of bitmoji's, flipgrid and anything pink and sparkly and can be found on twitter via **@debbaff**

Sue Beckingham

Sue is a National Teaching Fellow, Principal Lecturer in Digital Analytics and Technologies in the Department of Computing at Sheffield Hallam University with a lead role in Learning Teaching and Assessment. She is also a Senior Fellow of the Higher Education Academy, a Fellow of the Staff and Educational Development Association, a Certified Member of ALT and a Certified Management and Business Educator. Her research interests include social media for learning and digital identity, and the use of technology to enhance learning and teaching; and she has published and presented this work nationally and internationally as an invited keynote speaker. She writes a blog called Social Media

for Learning and can be found on Twitter as **@suebecks**. In 2015 she was shortlisted by Jisc as one of the Top 50 most influential higher education (HE) professionals using social media. An advocate of informal learning, she is a co-founder of the international #LTHEchat 'Learning and Teaching in Higher Education Twitter Chat'.

Dawne Irving-Bell

Dawne is a Senior Learning and Teaching Fellow at Edge Hill University. She is a Principal Fellow of the Higher Education Academy and recently received a national award in recognition of her outstanding contribution to teacher education. In her current role Dawne leads on university-wide strategies to enhance student learning. Dawne is the Network Lead for the AdvanceHE Connect Social Media for Learning Group, Editor of the Journal of Social Media for Learning and a member of the Scientific Committee for EuroSoTL 2021. Using funded secured from AdvanceHE Dawne established The National Teaching Repository a platform where colleagues can share effective interventions that lead to real improvements in teaching & learning. Dawne leads on the University's Graduate Teaching Assistant Teaching in Higher Education Programme, and the Postgraduate Certificate in Teaching in Higher Education Developing Practice through Pedagogic Research Module. She is a Principal Fellow of the Higher Education Academy (PFHEA) and proud to be a member of the team who

recently secured a Collaborative Award for Teaching Excellence. Dawne can be found on twitter **@belld17**

Susanne Faulkner

Suzanne Faulkner is a teaching fellow in Prosthetics and Orthotics, within the department of Biomedical Engineering at the University of Strathclyde in Glasgow, she is also a facilitator trained in the LEGO® Serious Play® (LSP) methodology. Suzanne is passionate about enhancing the student experience by focusing on improving student engagement, utilising social media in learning and teaching and incorporating playful learning. She has an active interest in the use of LSP to enhance participation of non-native speakers of English in group work activities. She has been nominated and shortlisted for several teaching excellence awards and is currently undertaking an EdD. Suzanne can be found on twitter **@SFaulknerPandO**

Rachelle O'Brien

Rachelle works as a Senior Digital Learning Designer within Durham Centre for Educational Development at Durham University. She has worked in Higher Education and as a consultant for a number of years in roles supporting staff with the pedagogical use of technology. She is passionate about digital education and her research interests include: games, playfulness, cognition and creativity with a key interest in

encouraging engagement and motivation with learning. She has recently graduated from an MSc in Digital Education where she conducted research into the use of game-informed learning, as a concept, which considers how we as educators can work to make education more playful. Rachelle can be found on twitter **@rachelleobrien**

Sarah Wright

As Faculty Senior SOLSTICE Fellowship Lead, Sarah has a strong interest in innovation in teaching and learning in higher education. Her role has seen her develop projects on the use of social media and online teaching, as well as lecture engagement and seminar design. Sarah is an Apple Distinguished Educator and enjoys collaborating with a global network of educators, reflecting on research informed pedagogies which she can disseminate within the University. Sarah has written for the Times Educational Supplement, contributing on a range of educational issues and sat on the Board of Management for NAACE, the national association for educational technology. Last year, she co-chaired the National Conference for Social Media in Higher Education and is now proud to sit on the editorial board for the journal. Sarah is a Fellow of the Chartered College of Teaching where she also enjoys reviewing for 'Impact' journal. Sarah was shortlisted for the Guardian Excellence in Teaching award in 2019 and the Educate North award in the same category. She was proud to win the Student Led Staff Award for

Outstanding Contribution to Teaching. Sarah is a self confessed geek, enjoying nothing more than arguing with a Google Home or exploring the latest features of VR - however, she prides herself on taking an informed and insightful approach to the use of technology in learning. You can find Sarah on twitter

@Sarah__wright1

CREATED BY
Debbie Baff

Credits:

Created with images by geralt - "twitter line power line" · geralt - "twitter line power line"
· geralt - "twitter line power line" · geralt - "twitter line power line" · geralt - "twitter line
power line" · geralt - "twitter line power line" · geralt - "twitter line power line"